

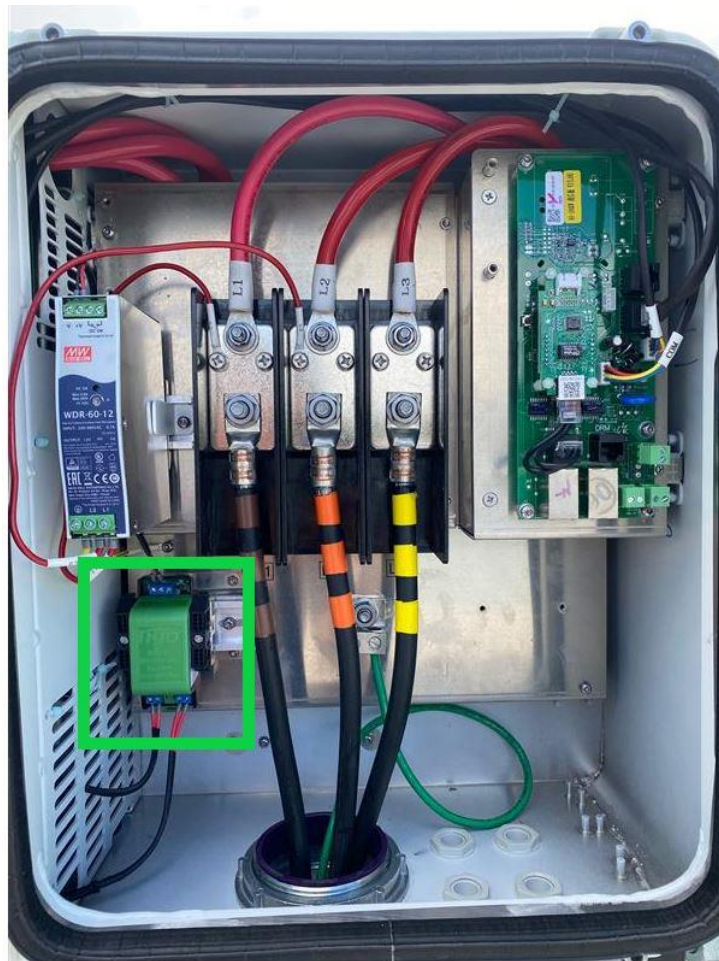
How to Disable the Internal Tigo Transmitter for the Solis-(75-100)K-5G Inverter Series

Required Tools:

- **Phillips screwdriver #2**
- **Technician screwdriver**

Steps:

1. Verify that the inverter is off – both the AC and DC switches must be open
2. Remove the AC wire box cover with a Phillips screw driver
3. Locate the Tigo transmitter in the bottom left corner of the wire box



4. Using a technician screwdriver, loosen and remove the two small black wires connected to the top of the transmitter. Then tape off the ends of the two cables with electrical tape so that they do not come into contact with anything in the wire box. Alternatively, you can loosen the other ends of the wires and remove the cables completely.
5. That's it! The transmitter will not be non-operable without AC power so you are good to turn the system back on once the wire box cover has been reinstalled.