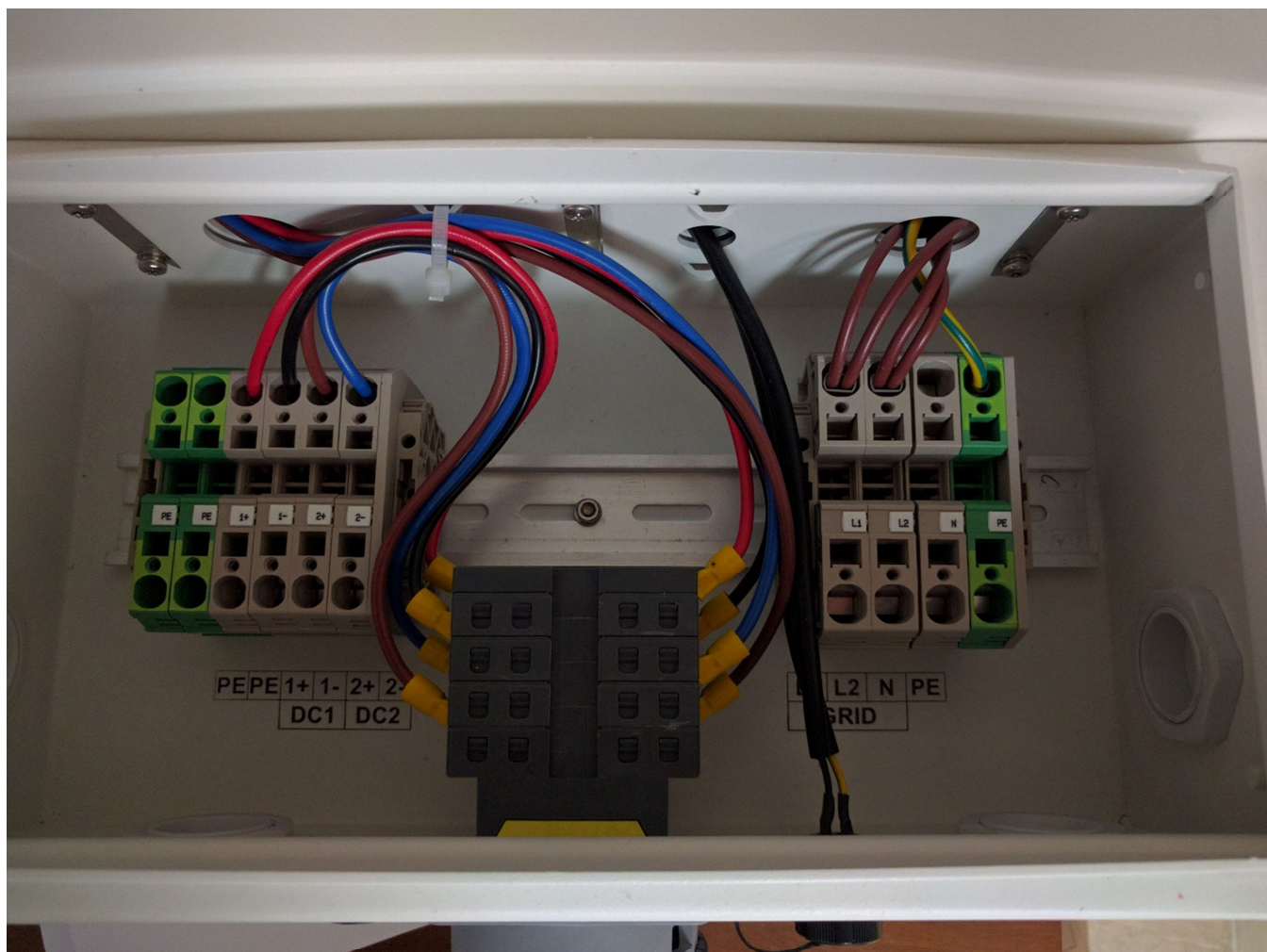


Guide to replacing the spring terminals in Ginlong inverters

The spring terminals in the Ginlong inverters may need to be replaced due to damage or even upgraded to accept accessories such as the Ginlong Rapid Shutdown Device (RSD) or third party equipment like Revenue Grade Meters (RGM).

Replacing the spring terminal is very straightforward. Only replace the spring terminals with new units that have the same electrical ratings as the original. Ginlong Technical Support can advise on the proper rating as well as possible sources for replacement spring terminals.

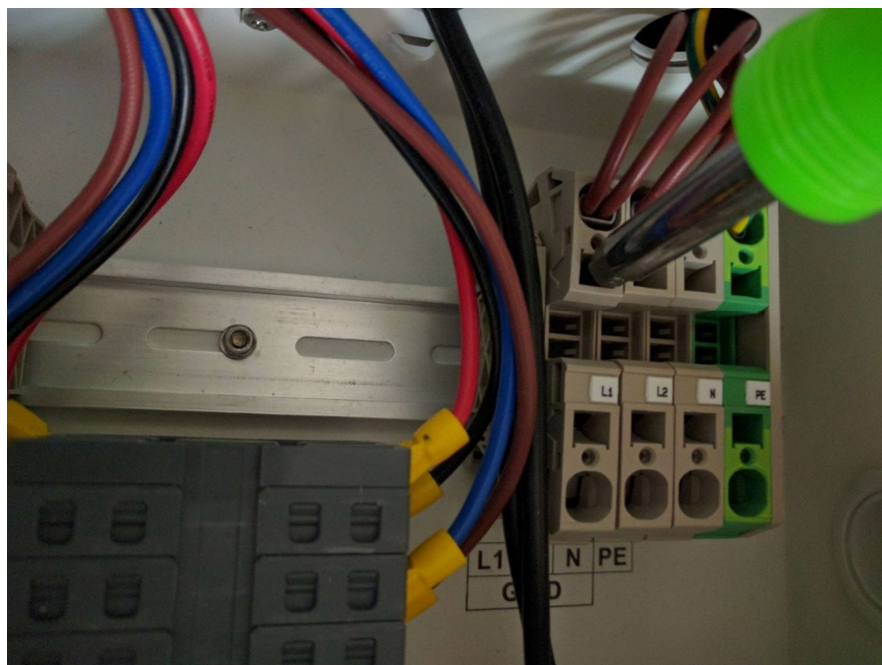
In this guide, we will discuss replacing the AC terminals with 3 position terminals for connecting RSD or RGM. Below is a view of the wiring box.



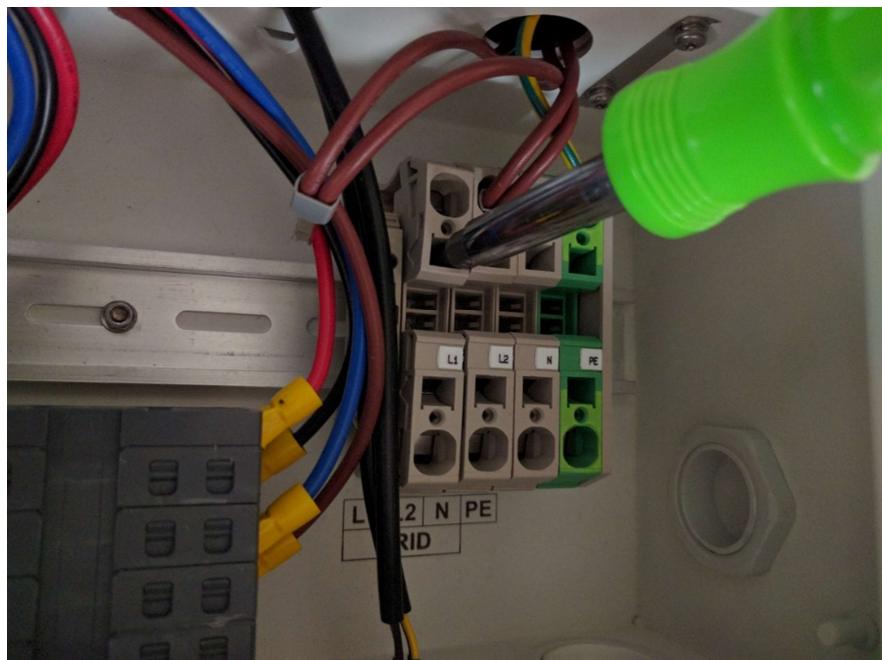
Application Notes



Insert a flat tip screwdriver in the square hole just below the AC wire. Press firmly into the spring terminal housing to release the wire.



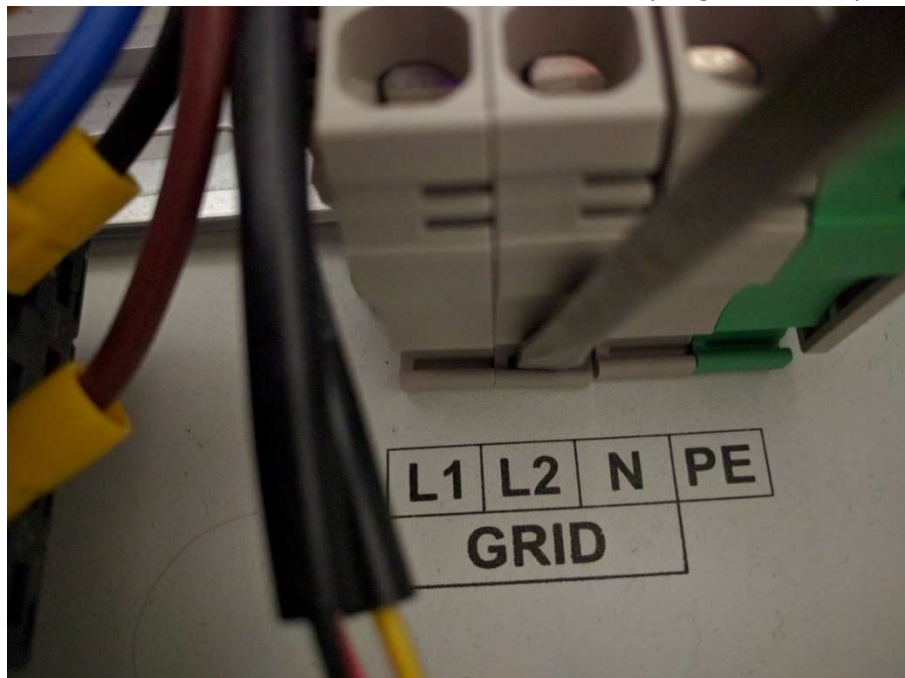
Once the screwdriver is inserted, remove the AC wire.



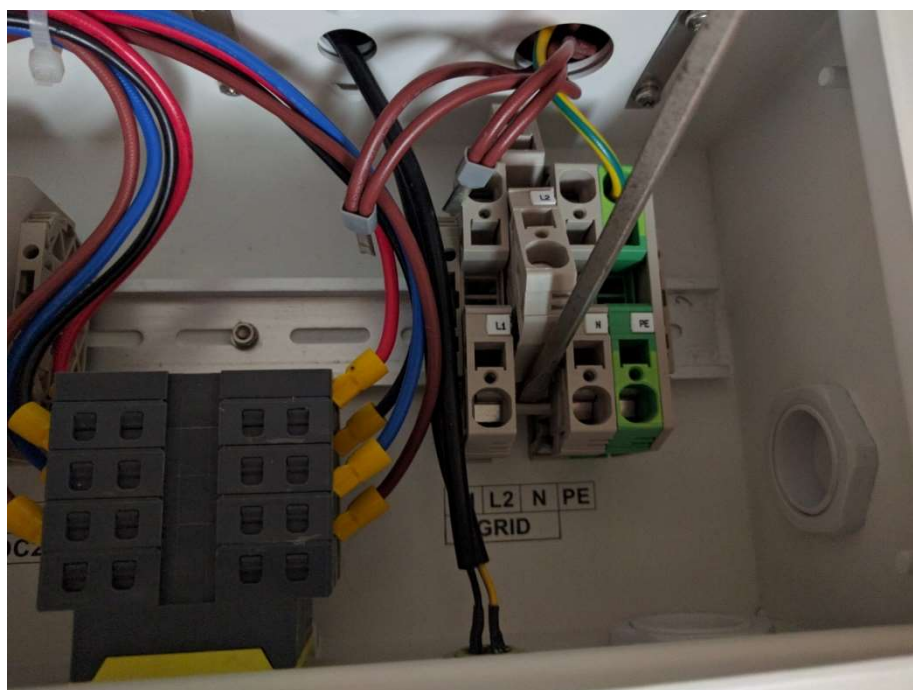
Application Notes



Once both AC wires have been released, remove the spring terminals by releasing the latch



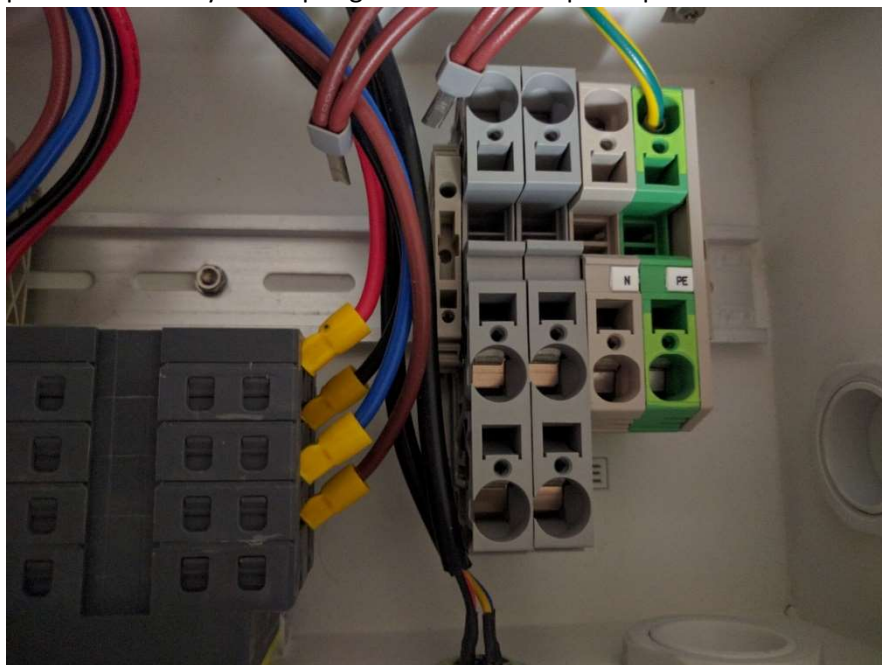
Once the latch has been released, the spring terminal will pivot off the DIN rail



Application Notes



The new spring terminals can then be put into place. Fit the fixed (non-latch) end on the DIN rail and press down firmly. The spring terminal will snap into place onto the DIN rail



Finally, replace the AC wires using the same method as removal

